

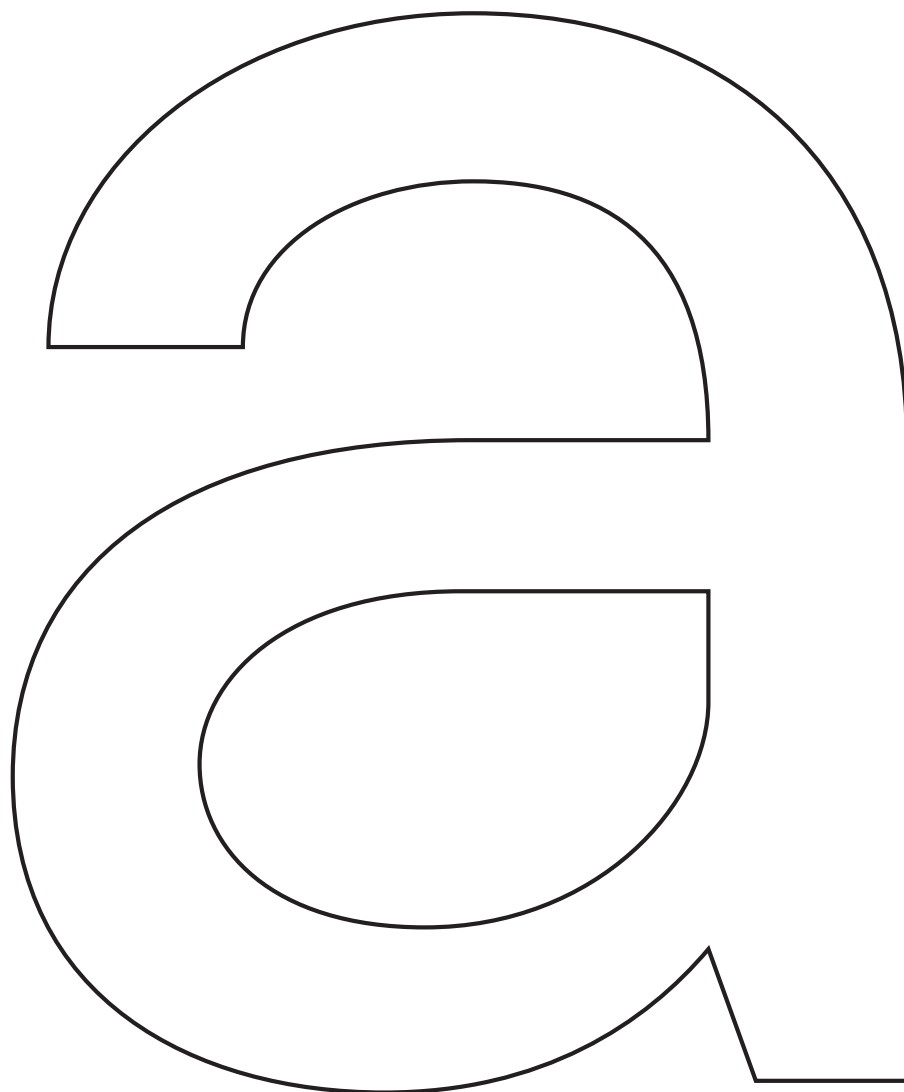


*Cooperativa Anonima*

*Servizi Tipografici*

[www.c-a-s-t.com](http://www.c-a-s-t.com)

[info@c-a-s-t.com](mailto:info@c-a-s-t.com)



**MGF Sans**

**type specimen**

*Pregato più volte, anzi costretto da miei amici, benignissimo Lettore, che riguardo havendo alla pubblica utilità e modo non solamente di questa età, ma delli posterì anchora, **volessi dar qualche essemplio di scrivere, et regolarmente formare** gli caratteri e nottelle (che cancellaresche hoggidì chiamano) **volentier pigliai questa fatica perché impossibile era de mia** porger tanti essemplii, che soddisfaceva a tutti, mi sono ingegnato di ritrovare questa nuova invention de littere, e metterla in stampa, le quali tanto se avvicinando scritte a mano, quanto capeva il mio*

**Description:**

Designed for the 2022 Milano Graphic Festival, and then extended to its successor BIG, this contemporary sans echoes the sparkling Milan of the booming 1960s and the rigour of the Swiss style

**Designed by:**

Fabrizio Falcone con Alex Bossi

**Production Years:**

2022–2024

**Styles:**

Regular *Regular Slanted*  
**Heavy Heavy Slanted**

Heavy 70/90

**abćdėfghij**

**klmňopqrstuv**

**ŵxyžø123456**

**789ǺABCDEFGHI**

**HĪĴKLMNOPQ**

**RSTUVŴXYZŽ**

**(&-?],\*!@→®**

**↗a€|√\*⬆**

Heavy Slanted 23/29

***The several sorts of Files that are in common use are the Square, the Flat, the three Square, the half Round, the Round***

Regular 16/20

The several sorts of Files that are in common use are the Square, the Flat, the three Square, the half Round, the Round, the Thin File, &c. All these shapes you must have of several Sizes and of several Cuts. You must have them of several sizes, as well because you may have several sizes of work, as for that it sometimes falls out that one piece of work may have many parts in it joined and fitted to one another, some of them great, and others small; And you must have them of several Cuts, because the Rough-tooth'd File cuts faster than the Bastard-tooth'd File, the Fine tooth'd File faster than the Smooth-tooth'd File.

Regular Slanted 30/36

*some of them great, and others small; And you must have them of several Cuts, because the Rough-tooth'd File cuts er than the Bastard-tooth'd File, the Fine tooth'd File fast-er than the Smooth-tooth'd File.*

Regular 42/48

We will take, for Example, a Piece of Stuff called a Quarter, which is commonly two Inches thick, four Inches broad, and seven Foot long. To plane this Square, lay

Heavy Slanted 58/58

***farai uno taglio  
circa uno dito o poco  
più sopra il principio  
di essa, cioè sopra  
quella parte, che sta  
fitta nell'ala, e per  
esso potrai trar la***

Regular 36/44

when you file upon the Prominent,  
or rising Parts of your Work, with your  
course cut File, you must also take care

Regular Slanted 24/32

*a che  
si fa agevolmente  
con la cima, che  
si taglia via dala  
penna. E dico che'l  
taglio sia da la*

Heavy Slanted 36/39

***for you may  
easily be deceived;  
because the course  
File cuts deep, and  
makes deepes in the***

Regular 16/20

Havendoti io descritto.

Studioso Lettor mio, l'anno passato uno libretto da imparar scrivere lettera Cancellaresca, la quale, a mio iudicio, tiene il primo loco, mi pareva integramente non haverti soddisfatto, se ancho non ti dimostrava il modo di acconciarti la penna, cosa in tal exercitio molto necessaria. E pero in questo mio secondo librecino nel quale anchora a satisfatione de molti, ho posto alcune varie sorti de littere (come tu vederai) ti ho voluto descrivere al più breve et chiaro modo che io ho possuto come tu habbi a temperarti detta penna.

Dele varie sorti de littere poi, che in

Regular Slanted 11/16

*But if it do not so comply,*

*that is, if it be not square to the first side which you will know by the riding of the inside of the Tongue upon one of the Edges; or some other part between the Edges, you must, with the Foreplane Rank-set, plain away that Stuff which bears off the inside of the Tongue from complying all the way with it. But if the Risings be great, you may, for quickness, hew away the Risings with the Hatchet: but then you must have a care you let not the edge of your Hatchet cut too deep into the Stuffs lest you either spoil your Stuff, by making it unfizeable, if it be already small enough; or if it have substance enough, make your self more labour to get out those Hatchet-stroaks with the Plane than you need. Then take off the roughness the Hatchet made with the Fore-plane Rank-set, then fine set, and*

Regular 11/16

But if it do not so comply, that is, if it be not square to the first side which you will know by the riding of the inside of the Tongue upon one of the Edges; or some other part between the Edges, you must, with the Foreplane Rank-set, plain away that Stuff which bears off the inside of the Tongue from complying all the way with it. But if the Risings be great, you may, for quickness, hew away the Risings with the Hatchet: but then you must have a care you let not the edge of your Hatchet cut too deep into the Stuffs lest you either spoil your Stuff, by making it unfizeable, if it be already small enough; or if it have substance enough, make your self more labour to get out those Hatchet-stroaks with the Plane than you need. Then take off the roughness the Hatchet made with the Fore-plane Rank-set, then fine set, and last of all with the Jointer, or Smoothing-plane: So is the second side also finished. To work the third side, set the Oval of the Gage exactly to that width from the Gage, that you intend stand too far from the Tooth, hold the Oval in your

Heavy 28/33

**Then apply the flat of the Oval to the second wrought side of your Stuffs so as the Tooth may reach athwart the breadth of the stuff upon the first slide, and keeping the**

Heavy Slanted 70/70

***if it be large,  
is called a Rub-***

