

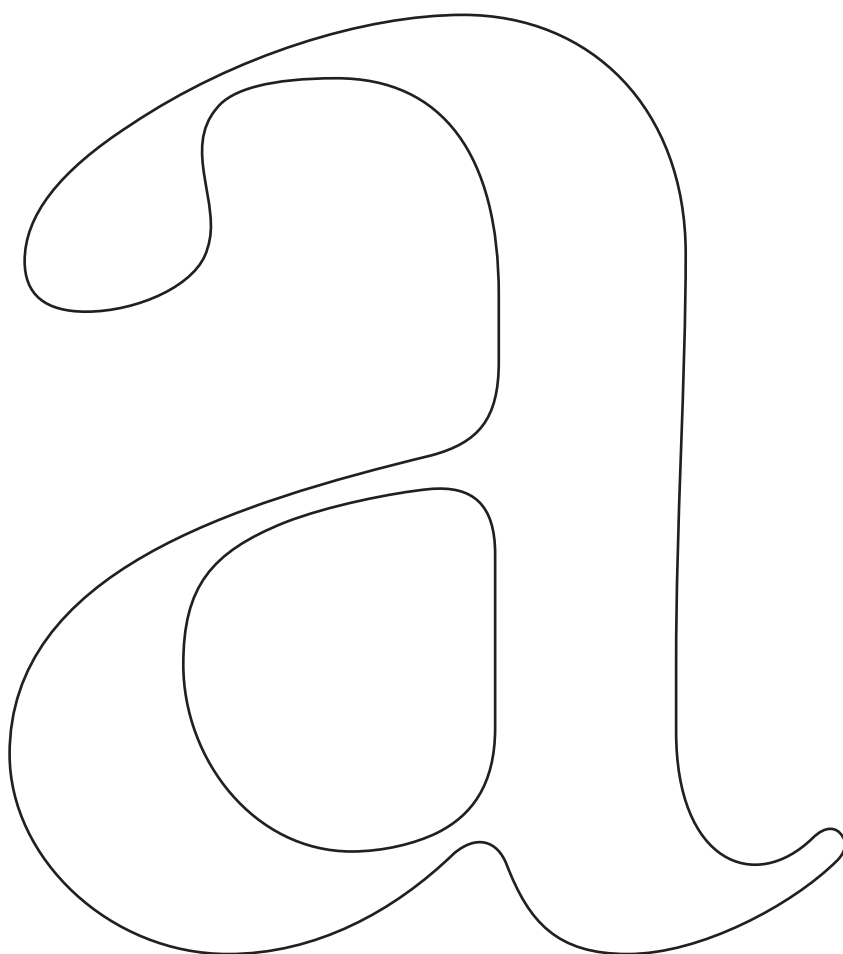
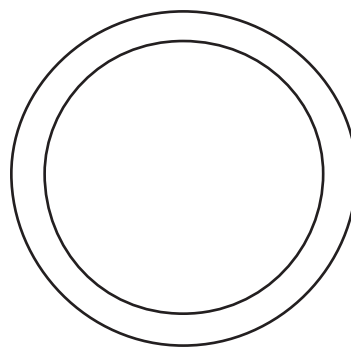


**Cooperativa Anonima**

**Servizi Tipografici**

[www.c-a-s-t.com](http://www.c-a-s-t.com)

[info@c-a-s-t.com](mailto:info@c-a-s-t.com)



**Sole Serif Rounded**

---

**type specimen**

**Pregato più volte, anzi costretto da molti amici, benignissimo Lettore, che riguardo havendo alla pulcritudine e comodo non solamente di questa età, ma delli posterì anch'io volessi da qualche essemplare di vere, et regolatamente formate caratteri e note delle lettere (che cancellaresche hoggidì chiamano) volentier pigliai questa fatica. ché impossibile era de mia mano porger tanti essempli, che soddiscessino a tutti, mi sono ingegnato**

DESCRIPTION:

Sole Serif Rounded is the new cut of CAST's most successful typeface for newspapers. Compared with its closest competitor Sole Serif Display, it features rounded edges, lighter joints, shorter bracketed serifs. With its peculiar design it works specifically as a display face providing users with the best results on magazine and newspaper headlines, and on packaging, posters and other similar applications.

Sole Serif Rounded is available in six weights with matching italics and four optical sizes: Subhead, Headline, Display and BigDisplay.

DESIGNED BY:

Giulio Galli & Luciano Perondi

PRODUCTION YEARS:

2024

STYLES:

Big Display	Light	Headline	Light
	Regular		Regular
	Medium		Medium
	Bold		Bold
	ExtraBold		ExtraBold
	Black		Black
Display	Light	SubHead	Light
	Regular		Regular
	Medium		Medium
	Bold		Bold
	ExtraBold		ExtraBold
	Black		Black

ä b ç d é f g h í j k

l m ñ ø p q r š t ü v w

x y z 0 1 2 3 4 5 6 7 8 9

A B C Ď ě F G H ĩ J K

L M N Ô P Q R Š T Ů

V W X Y Z ( & - » ] , }

! ? ® ™ ¼ • S P Q R

€ £ \$ √ \* ¶

Subhead Bold 18/22

**All which things being well considered, and drawn on Papers, or a Model made thereof, before the Building is begun, there will be no need of Alterations, or Tearing and pulling the Building to pieces after it is begun; for besides the hindrance of the Procedure of the Work, it makes the BUILDING LAME AND DEFICIENT, nothing being so well done, when 'tis put up, and pulled down, and set up again, as**

Headline Regular 30/33

well  
because you may have eral sizes of work, as for that it sometimes falls out that one piece of work may haveyou

Display Light 38/44

there will be no need of Alterations, or Tearing and pulling the BUILDING to pieces after it is begun; for besides the hidrance of the Procedure of the Work, it makes the Building lame and Deficient, nothing being so well done, when 'tis put up, and pulled down, and set up again, as if it were well done at first.

SubHead Regular 15/20 The Rough or Course-tooth'd File (which if it be large, is called a Rubber) is to take off the unevenness of your work which the Hammer made in the Forging; the Bastard-tooth'd file is to take out of your work, the deep cuts, or file-strokes, the Rough-file made; the Fine-tooth'd file is to take out the cuts, or file-strokes, the Bastard-file made; and the Smooth-file is to take out those cuts, or file-strokes, that the Fine file made. Thus you see how the Files of several Cuts succeed one another, till your Work is so smooth as it can be filed. You may make it yet smoother with Emerick, Tripoli, & c. But of that in its proper place, because it suits not with this Section of Filing. You must take care when you use the Rough File, that you go very lightly over those dents THE HAMMER MADE IN YOUR WORK, unless your work be forged somewhat of the strongest, for the dents being

Display Bold 36/40 or rising  
Parts of your  
Work, with your  
course cut File,  
you must also take  
care that you file  
them not more  
away than you  
need, for you may  
easily be deceived;  
because the  
course File cuts  
deep, and makes

Headline Medium 24/30 Rough File, that you go very lightly over those dents the Hammer made in your work, unless your work be forged somewhat of the strongest, for the dents being irregularities in your work, if you should file away as much in them, as you do off the Eminencies or when you file upon the PROMINENT,

Big Display 72/80

nothing being  
so so well done,  
when 'tis put up,  
and pulled down,

Display Bold 49/54

**Si come a chi vol sa-  
per sonare e bisogno per  
molte cose, che ponno in-  
tervenire sapere anchora  
accordare lo istrumento,**

Headline Light 30/36

passato uno libretto da imparar  
scrivere littera Cancellaresca, la quale, a  
mio iudicio, tiene il primo loco, mi pareva  
integramente non haverti satisfatto, se  
ancho non ti dimostrava il modo di ac-

